

Windows XP

- Use *FET-Pro430 lite* to flash Mecrisp into MSP430 LaunchPad.
- Use a Terminal like *TeraTerm* to operate Mecrisp.
- Use *Notepad+* to write source code.

NOTE: Source code must have CRLF as end of line.
Convert to CRLF before you use code that has been written in
Linux - they use LF which does not work with Tera Term

See how it is done

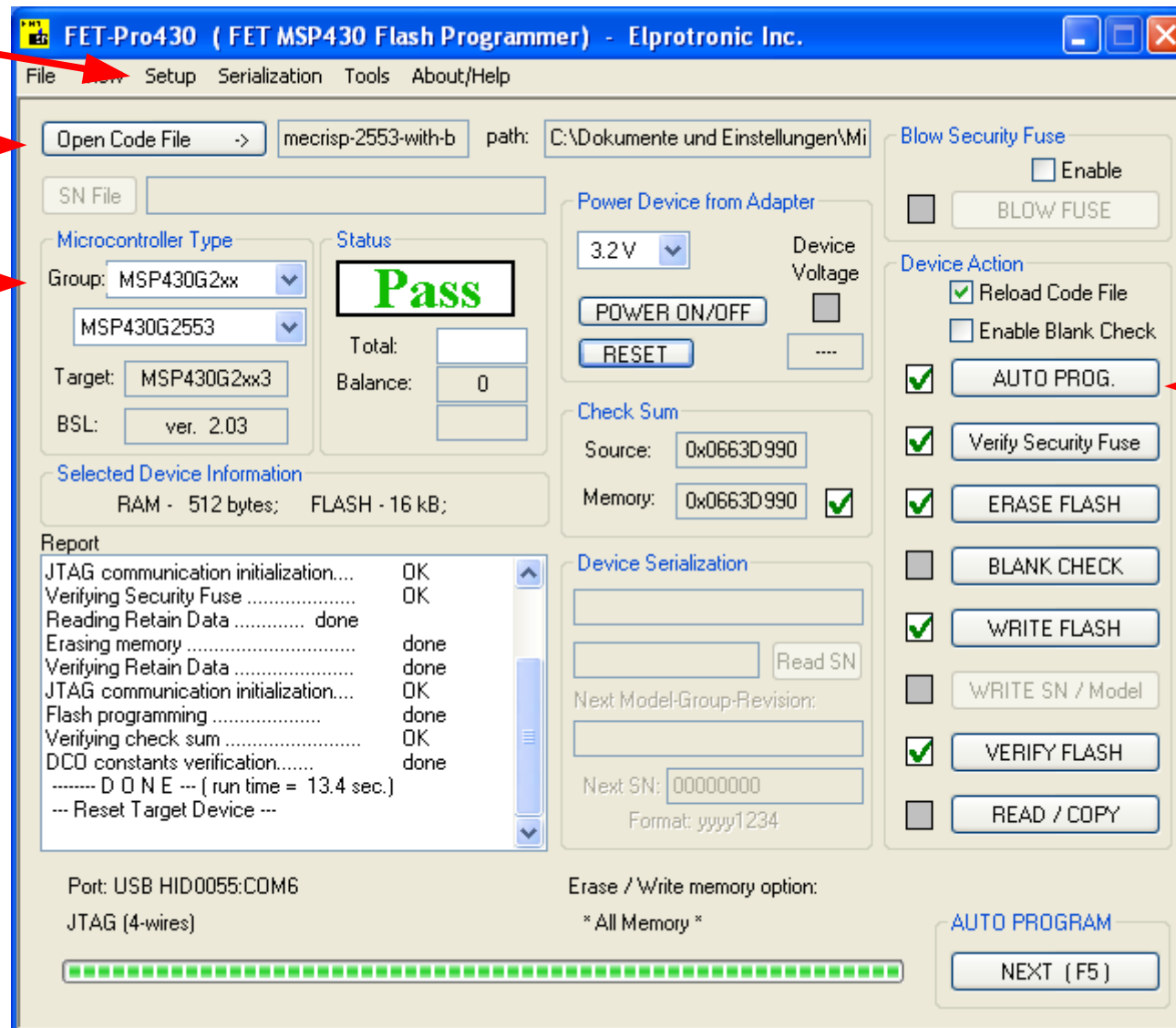


Use FET-Pro430 lite to flash Mecrisp into MSP430 LaunchPad.

2. Setup Connection

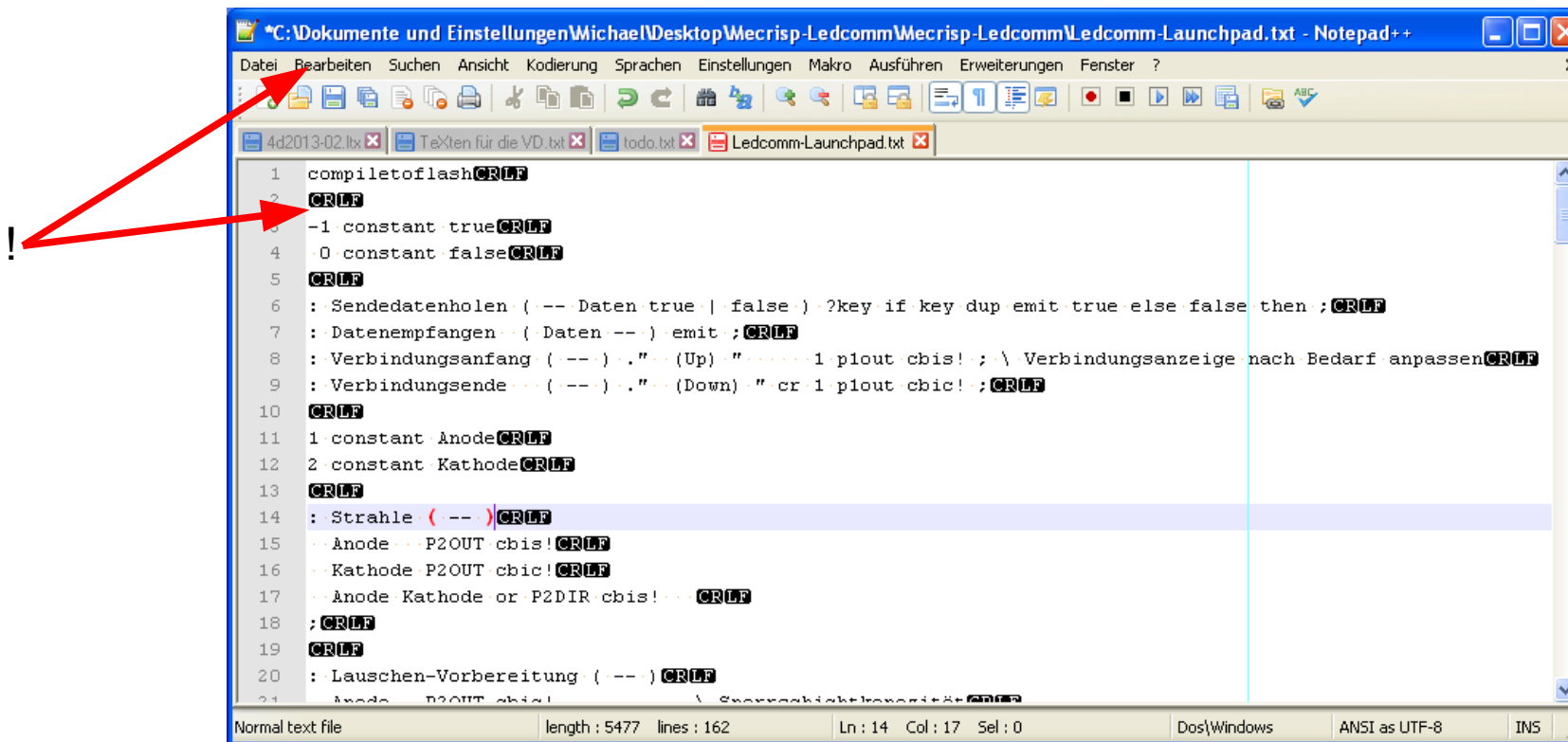
3. do this

1. Select LaunchPad



4. flash it

Use Notepad+ to convert source code
so that CRLF is end of line.

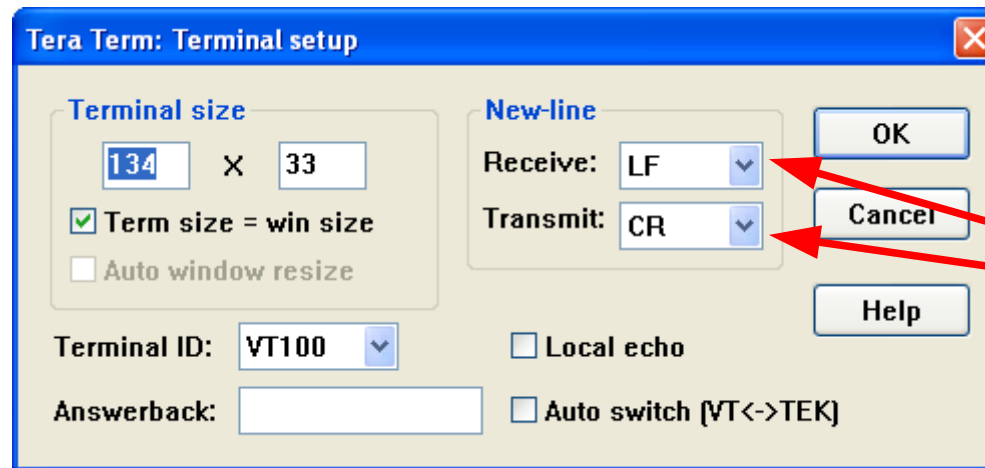


The screenshot shows the Notepad++ application window with the file `*C:\Dokumente und Einstellungen\Michael\Desktop\Wecrisp-Ledcomm\Wecrisp-Ledcomm\Ledcomm-Launchpad.txt` open. The menu bar includes `Datei`, `Bearbeiten`, `Suchen`, `Ansicht`, `Kodierung`, `Sprachen`, `Einstellungen`, `Makro`, `Ausführen`, `Erweiterungen`, and `Fenster`. The toolbar contains various icons for file operations and editing. The taskbar shows several open files: `4d2013-02.ltx`, `TeXten für die VD.txt`, `todo.txt`, and `Ledcomm-Launchpad.txt`. The main text area displays the following code:

```
1 completeoflashCRLF
2 CRLF
3 -1 constant trueCRLF
4 0 constant falseCRLF
5 CRLF
6 :Sendedatenholen (--- Daten true | false) ?key if key dup emit true else false then ;CRLF
7 :Datenempfangen (---) emit ;CRLF
8 :Verbindungsanfang (---) ." (Up) " 1 plout cbis! ; \ Verbindungsanzeige nach Bedarf anpassenCRLF
9 :Verbindungsende (---) ." (Down) " cr 1 plout cbic! ;CRLF
10 CRLF
11 1 constant AnodeCRLF
12 2 constant KathodeCRLF
13 CRLF
14 :Strahle (---)CRLF
15  Anode P2OUT cbis!CRLF
16  Kathode P2OUT cbic!CRLF
17  Anode Kathode or P2DIR cbis!CRLF
18 ;CRLF
19 CRLF
20 :Lauschen-Vorbereitung (---)CRLF
21  Anode P2OUT cbis! \ SperrschichttransistorCRLF
```

The status bar at the bottom indicates: `Normal text file`, `length : 5477`, `lines : 162`, `Ln : 14`, `Col : 17`, `Sel : 0`, `Dos\Windows`, `ANSI as UTF-8`, and `INS`.

Setup Tera Term to download source code.



Note

New-line (receive)

CR

Tera Term doesn't convert it.

CR+LF

Received CR (\$0D) characters are converted to CR+LF (\$0D \$0A) pairs.

e.g.) If "CR LF" is received, it is converted to "CR LF LF."

LF

Received LF (\$0A) characters are converted to CR+LF (\$0D \$0A) pairs.

e.g.) If "CR LF" is received, it is converted to "CR CR LF."

New-line (transmit)

CR

Tera Term doesn't convert it.

CR+LF

CR (\$0D) characters to be sent are converted to CR+LF (\$0D \$0A) pairs before they are actually sent.

Copy&Past source code into Tera Term to download it.

Ctrl-A
Ctrl-C

Mouse
click
right

